

RERA : P02400006250
LP : 215 / 2020 / H



LIGHTHOUSE
PROPERTIES

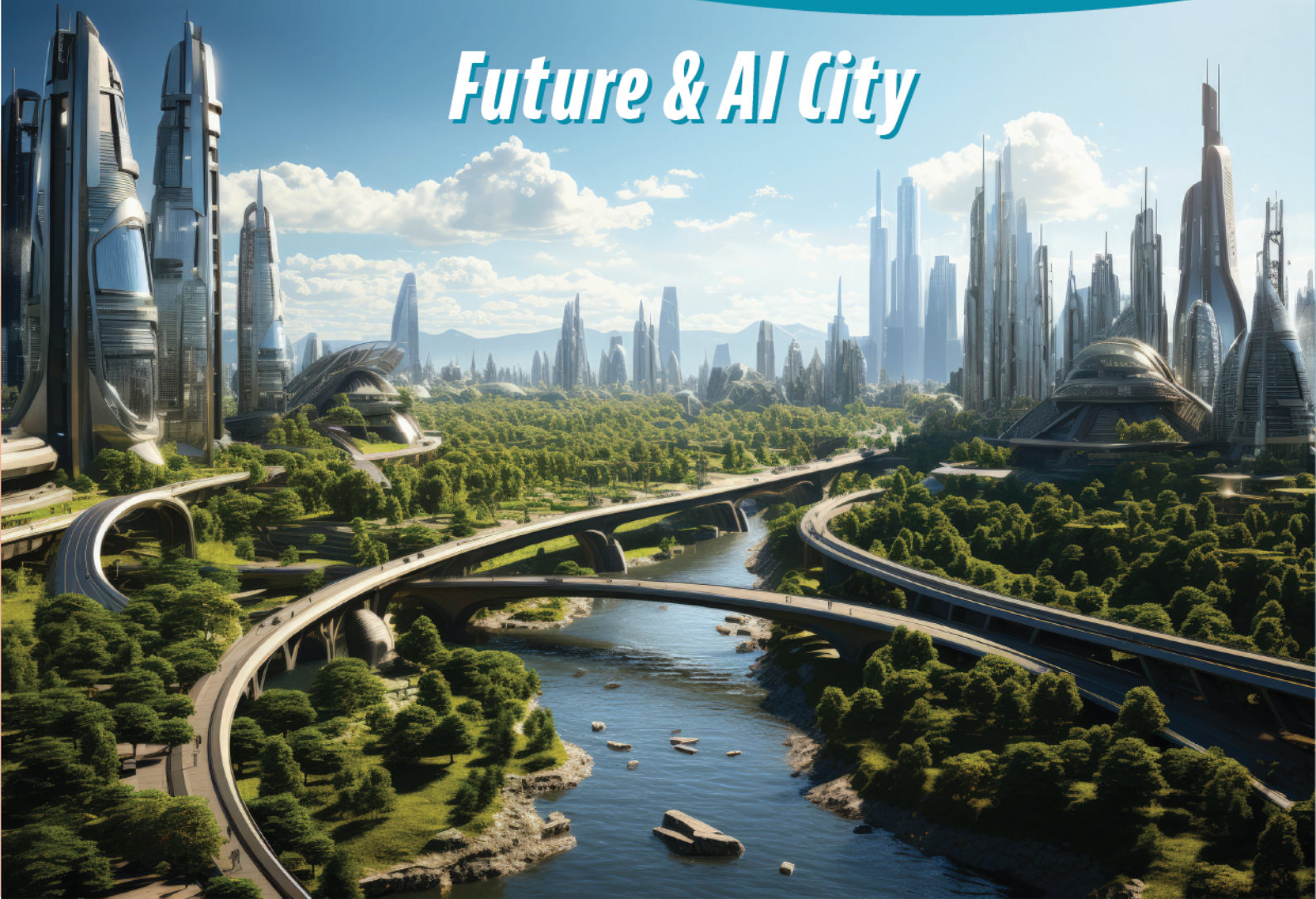
*Helping you find the
property of your dreams*



**Pharma
Green City**

Sai Ram project by
Infra Developers

Future & AI City



OVERVIEW

Welcoming you to a neighbourhood where nature and convenience are harmonious, delivering a truly inspiring place to call home.

Sai Ram Infra is a leading real estate developer and investor with a clear desire to improve environment to enrich people's lives. For those whose social standing can be matched only by a few, who always seek class that is unmatched, here's a place for them to invest. An investment that compliments them, compliments their taste and the way they live.

Experience life in full bloom, register and secure your new villa plot today.

AREA STATEMENT

Layout Area	Ac. 16.951 Cts.	82042.84 Sq. Yds
Site Reserved For Open Space (park) (10.00%)	Ac. 1.695 Cts.	8203.80 Sq. Yds
Roads Area (29.30%)	Ac. 4.968 Cts.	24045.12 Sq. Yds
Plotted Area (60.70%)	Ac. 10.288 Cts.	49793.92 Sq. Yds
Mortgage Area (15.51%) On Plotted Area (from Plot No's 66 To 96)	Ac. 1.597 Cts.	7729.48 Sq. Yds
No. Of Plots	188	

PROJECT HIGHLIGHTS

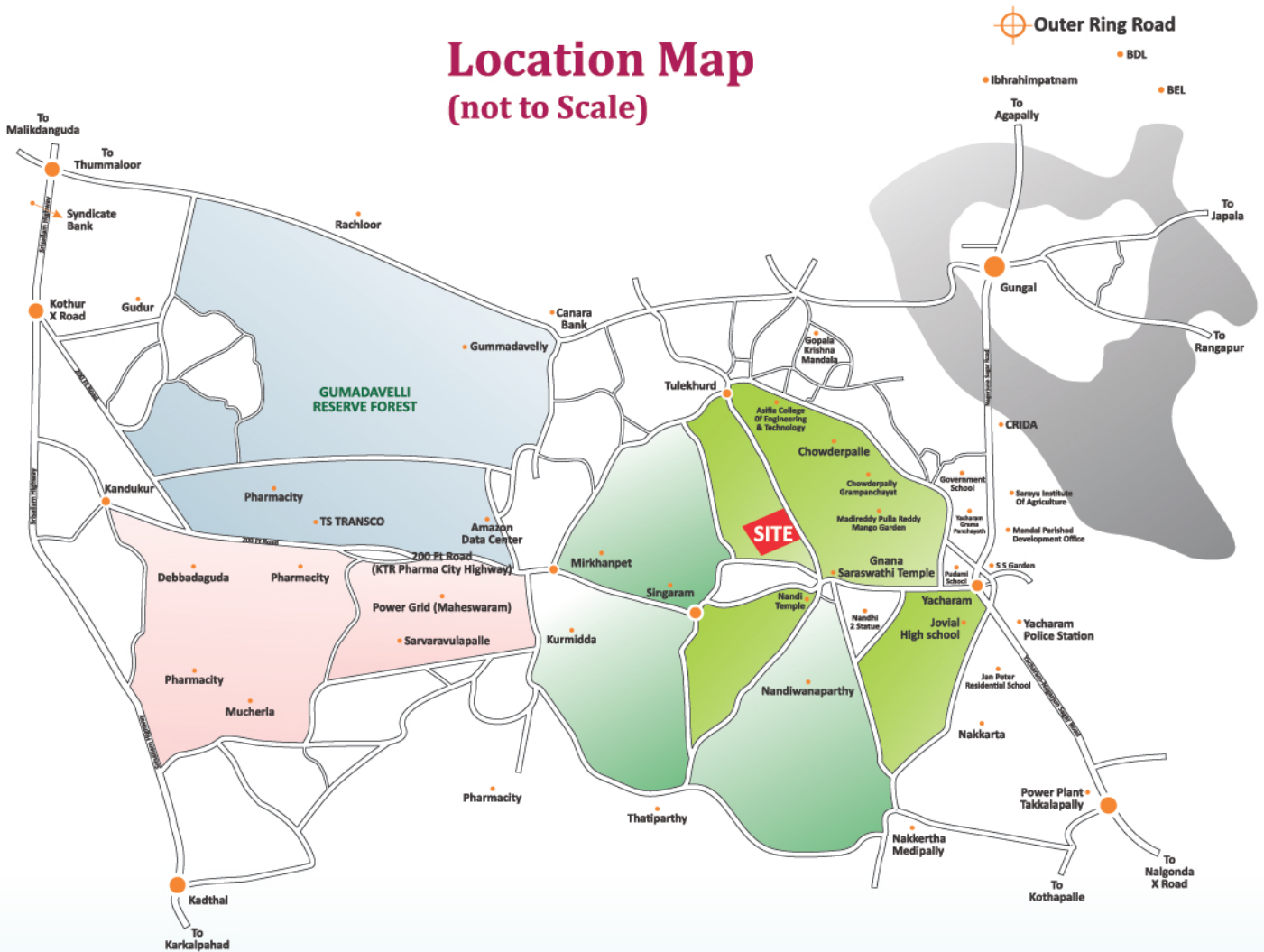
- + DTCP Approved Layout With Clear Title
- + 100% Vaastu Compliant
- + 40' And 33' Feet BT Road
- + Main Gate With Arch
- + Underground Drainage System
- + Over Head Water Tank
- + Water Supply Lines For All Plots
- + Electrical Transformer With Street Lights
- + Avenue Plantation & Kerb Stones
- + Beautifully Designed Landscape Gardens
- + Total Project Is Secured With Barbed Wire Fencing

Master Plan



Where Dreams
Come Home.

Location Map (not to Scale)



Location Highlights

- + Very Near to Nagarjuna Sagar Highway
- + Very Near to Pharma City @19,333 Acres
- + Very Near to Amazon Data Center Campus @150 Acres
(5809 Crores Investment)
- + Near to Eliminedu Aerospace @500 Acres
- + Near to Adibatla IT Hub and Aerospace @2500 Acres
- + Near to Proposed Regional Ring Road
- + Near to BDL, BEL, NSG, Octopus
- + Near to Ranga Reddy Collectorate office
- + Near to International Airport
- + Near to Many Educational Institutions



LIGHTHOUSE
PROPERTIES

Corporate Office - Raidurgam

#302, 3rd Floor, Supriya Estates, Behind MJR Magnifique,
Prashanthi hills, Raidurgam circle, Hyderabad, Telangana - 500104.