



- Water supply from OHT to each Plot
- Underground Sump
- Rain Water Harvesting pits for ground recharge
- Storm water saucer drains to guide the rainwater to harvest pits



- Electricity provision to every plot
- Street lights in the entire layout
- Dedicated Transformers for the layout

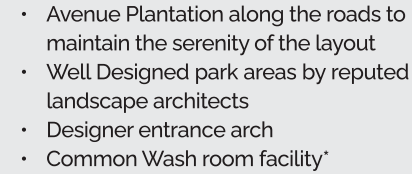


- Underground drainage network with separate lines on both sides of the road
- Septage Tanks



- 60 and 33 Feet wide Black Topped roads at engineering standards
- Kerb Stoning for the Footpaths

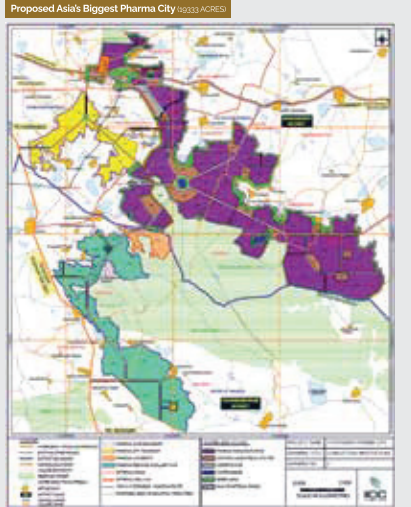
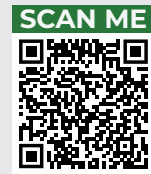
- Company to maintain the Project for 5 years by collecting corpus fund for Upkeepment of the layout



- Open Air Gym
- Walking Track
- Cycling Track
- Beach Volley Ball Court
- Basket Ball half court
- Children Play Area
- Yoga Area
- Rock Garden
- Boundary Plantation



- Common areas protected with Compound Wall



Source: <https://lifesciences.telangana.gov.in/life-sciences-grid/clusters/hyderabad-pharma-city/>



Open Air Gym



Walking Track



Cycling Track



Basket Ball half court



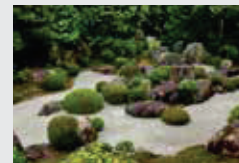
Children Play Area



Yoga Area



Beach Volley Ball Court



Rock Garden

Master Plan



Site Address :
Ayyawariguda & Nandiwanaparthy Village, Yacharam Mandal, RR Dist.

Extent : Acres 36-22 Guntas

504 Premium Open Plots

Ranging from 165 to 638 Sqyd Plots

DTCP APPROVED

RERA REGISTERED

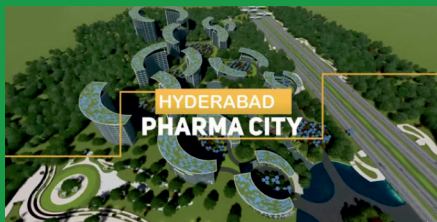




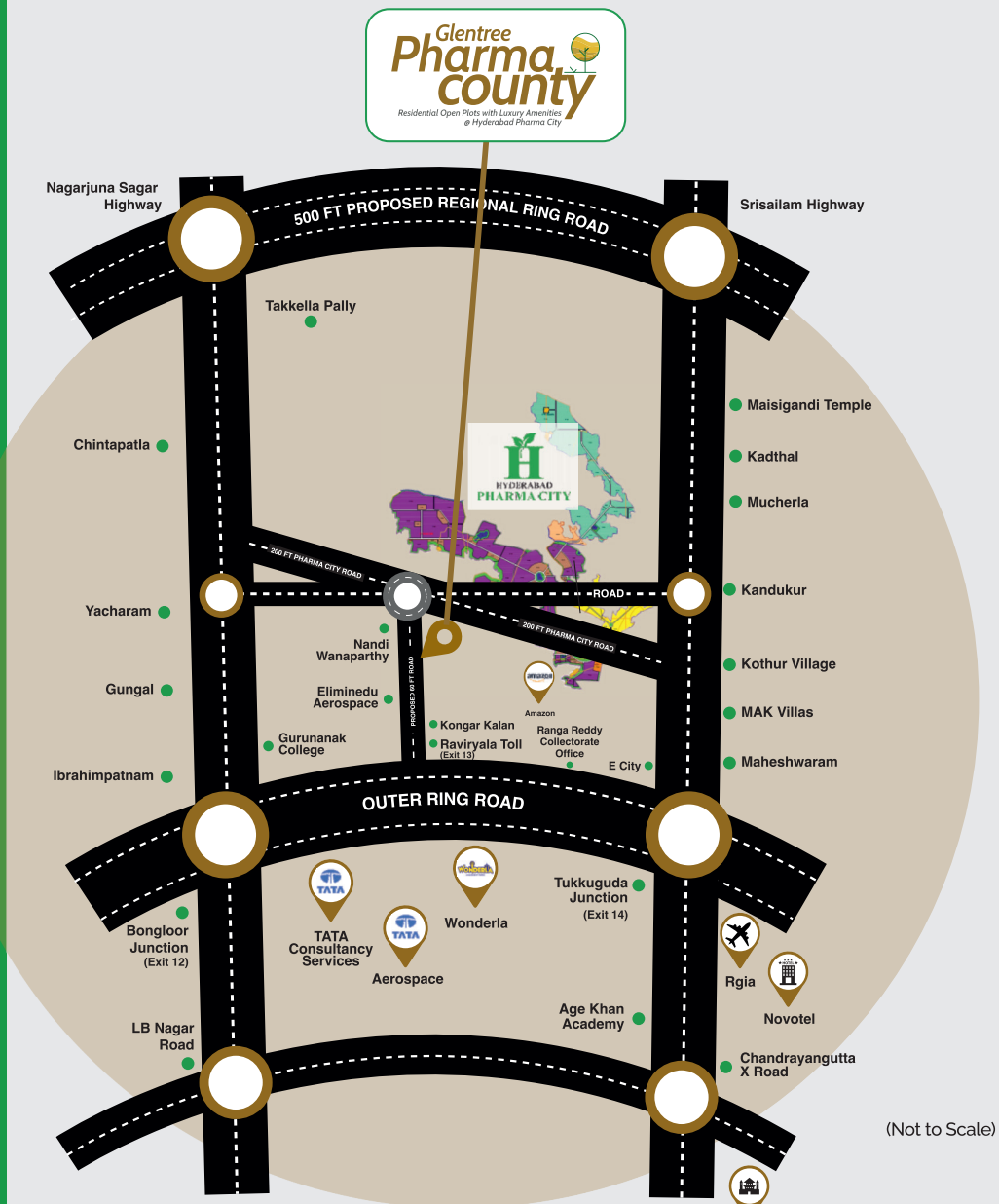
An unparalleled growth story

Glentree Pharma County and County II are systematically planned and DTCP approved layouts. It has been designed and is being executed with future-ready facilities. Set exactly 60 Km away from Hyderabad, the project has all the amenities you would dream of and more. From underground drainage to underground water, from black-top roads to beautifully designed welcome arch.

Set amongst a prime location, Glentree Pharma County and Pharma County II are home to world-class infrastructure and the pride of Nandiwanaparthi. The industrial cluster nearby includes Asia's largest pharmaceutical park, the ambitious Pharma City project. The 1,9333 acre project Pharma City has been accorded the National Investment and Manufacturing Zones (NIMZ) status. As a suburb of Hyderabad Nandiwanaparthi is blessed with self-contained community facilities such as markets, primary health centers and sports facilities



Source: <https://lifesciences.telangana.gov.in/life-sciences-grid/clusters/hyderabad-pharma-city/>



Site Address :
Ayyawariguda & Nandiwanaparthi Village
Yacharam Mandal, RR Dist.

Project by :



OPEN PLOTS | APARTMENTS | VILLAS

Marketed by :



Flat# 302, 3rd Floor,
Supriya Estates,
behind MJR Magnifique,
Prashanthi Hills,
Raidurgam circle,
Hyderabad - 500032



RERA - P02400003880 | RERA - P02400003881

Secure the Health of Your Investments



LP No. - 334/2021/H

LP No. - 243/2021/HRO/H1



Marketed By:



OPEN PLOTS FOR SALE @ PHARMA CITY